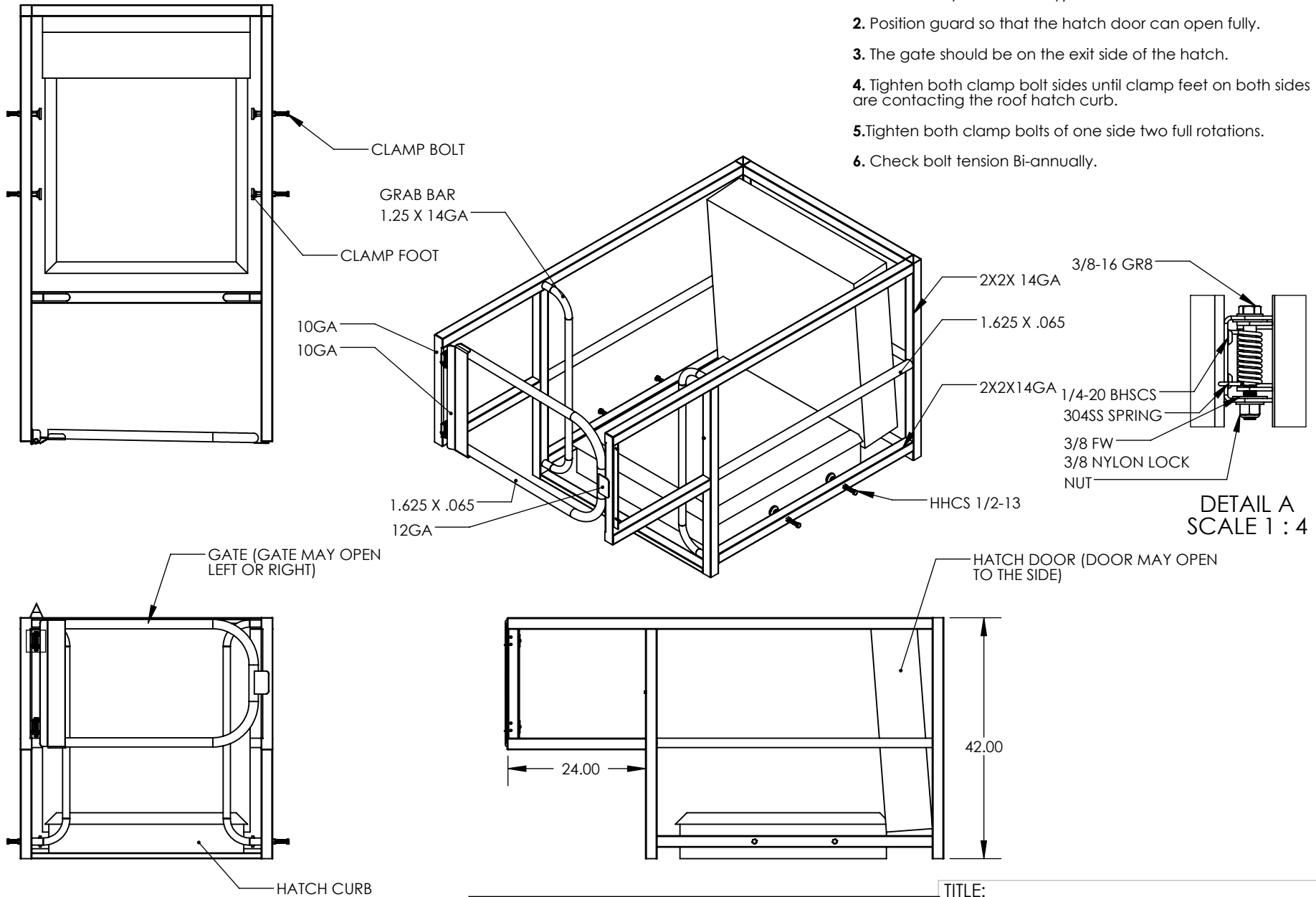
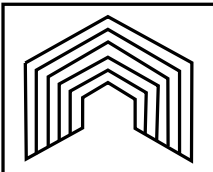


INSTALLATION STEPS:

1. Lower hatch guard over roof hatch (removal of clamp feet and bolts may be necessary).
2. Position guard so that the hatch door can open fully.
3. The gate should be on the exit side of the hatch.
4. Tighten both clamp bolt sides until clamp feet on both sides are contacting the roof hatch curb.
5. Tighten both clamp bolts of one side two full rotations.
6. Check bolt tension Bi-annually.



DETAIL A
SCALE 1 : 4



Edge Fall Protection, LLC
www.EDGEfallprotection.com
 TF/F: 844-314-1374
Info@edgefallprotection.com

TITLE: HATCH GUARD INSTALL DIAGRAM

| | | |
|----------|----------|----------|
| SIZE | DWG. NO. | REV |
| A | | A |

SCALE: 1:24 WEIGHT: SHEET 1 OF 1