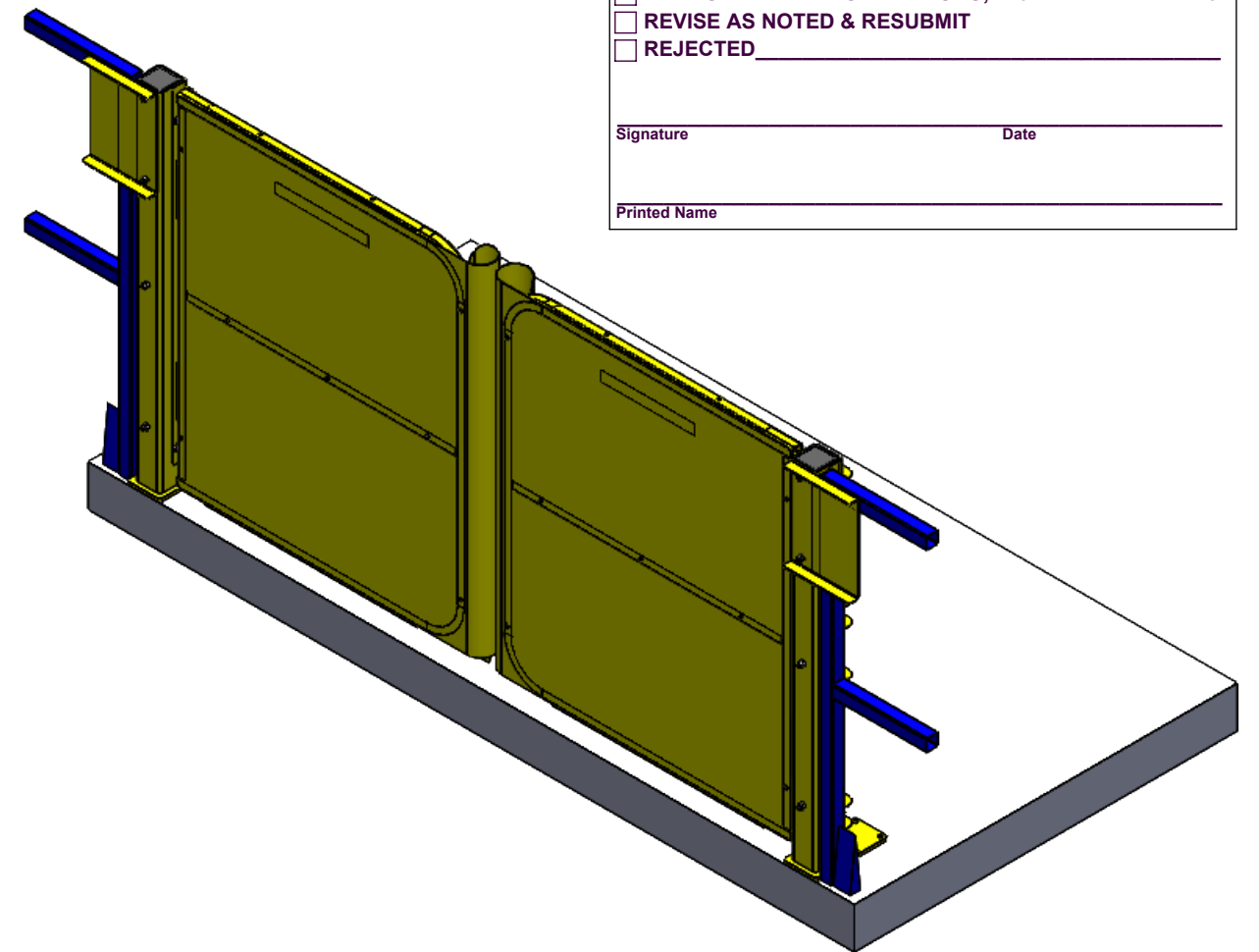
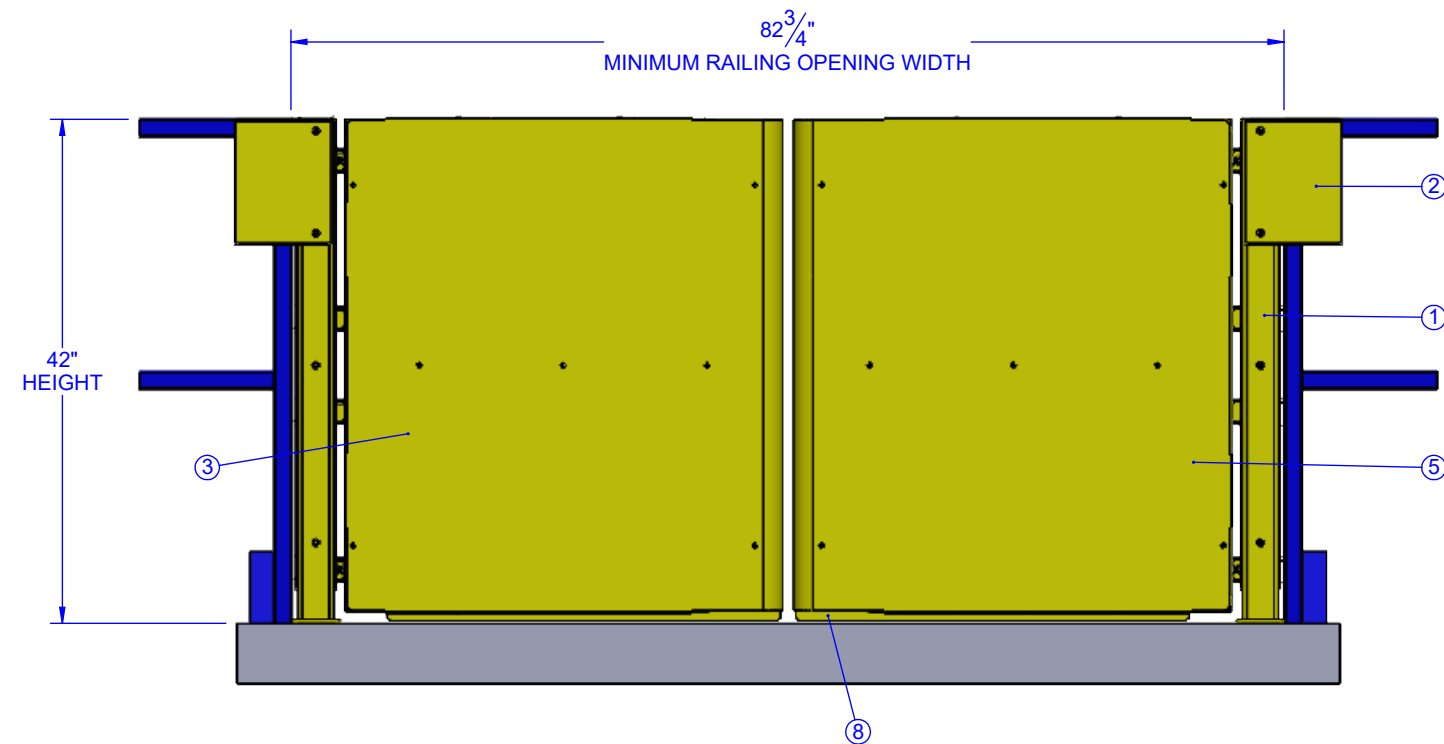
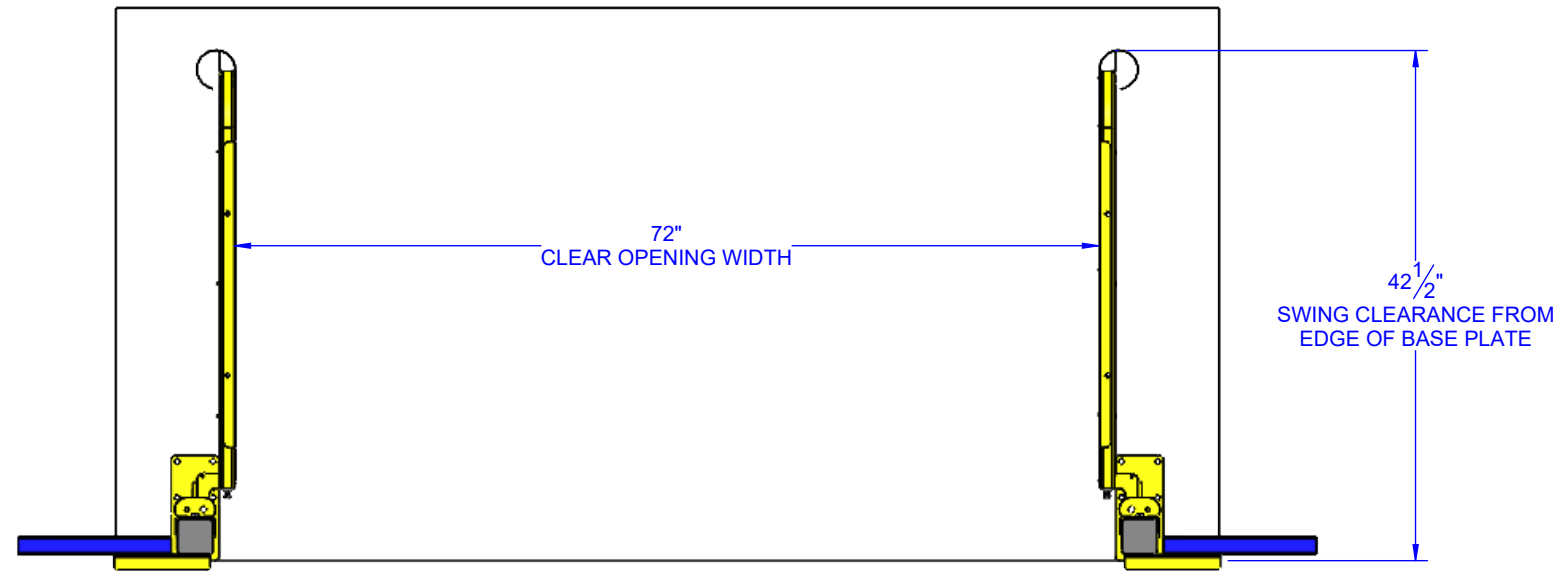


B.O.M. IS FOR QTY - 1

ITEM NO.	PART NO.	DESCRIPTION	Qty	U/M
1	515402	PLG;MOUNT POST-PCY	2	EA
2	515407	PLG;TIE CHANNEL-PCY	2	EA
3	515454	PLG;LEFT HAND ASM-PCY-72"	1	EA
4	515497	PLUG;TUBE BLACK, 3" SQ 7-3GA	2	EA
5	515455	PLG;RIGHT HAND ASM-PCY-72"	1	EA
6	502934	BOLT;HEX3/8"16X3 3/4GR5ZN	8	EA
7	501120	NUT;NYLOCK 3/8"16 ZN	8	EA
8	515464	PLG;TOE BOARD-PCY-72"	2	EA
9	501501	SCREW;HEXDRILL12-14X3/4ZN	6	EA
10	515508	FOAM;5.5X1.75X1.5	2	EA
11	515577	FOAM;2.0X9.875X43.0	4	EA
12	515578	FOAM;0.75X5.875X42.5	11	EA
13	515628	BOX;PLG 60 & 72	1	EA



PS INDUSTRIES INC. SUBMITTAL REVIEW
APPROVER IS REQUIRED TO ONE BOX ONLY AND SIGN

APPROVED; PROCEED WITH FABRICATION
 APPROVED WITH CORRECTIONS; PROCEED WITH FABRICATION
 REVISE AS NOTED & RESUBMIT
 REJECTED _____

Signature _____ Date _____

Printed Name _____

C:\PS DOORS\PROJECTS\YELLOW PRODUCTS\PLG\STOCK\PLG-72.PCY\PLG-72.PCY: 6/30/2021

PROPRIETARY AND CONFIDENTIAL DRAWINGS ARE EXCLUSIVE PROPERTY OF PS INDUSTRIES INCORPORATED AND CANNOT BE USED IN WHOLE OR PART WITHOUT WRITTEN CONSENT © 2021 PS INDUSTRIES INCORPORATED ALL RIGHTS RESERVED

FINISH:

PRODUCT DESCRIPTION: SAFEMEZ PALLET GATE-PCY-72"

WO:

SHIP TO:

DWG STATUS:

PART #: **PLG-72-PCY**

UNLESS OTHERWISE SPECIFIED

QTY:

PS INDUSTRIES
INCORPORATED

SN:

SOLD TO:

APPROVAL DRAWING

LINEAR ± .030" (1/32")
HOLE/CUTOUT ± .015" (1/64")
SQUARENESS ± .060" (1/16")
ANGULAR ± .5°

DATE:

1150 48th St. S
GRAND FORKS, ND 58201
PH. 701-746-4519
FAX 701-746-8340

CHECKED: /

PROJECT NAME:

ESTIMATED WEIGHT: **238.335 LBS.**

SHEET # 1 OF 1

SO #:

DWG #: PLG-72-PCY

DWG BY: nlawonn

REV: C