

Standard Technical Data for the Vertical Mezzanine Gate

- 1. Mezzanine Gate Operation to be one of the following;
 - a. Manual; counterweighted for ease of operation.
 - b. Electric; Electric drive system, 115 VAC, (24 VDC Secondary), 60 HZ, 1/3 HP. Operator control panel includes Timer-to-Close capability, Obstruction Sensing and one (1) three-button (Open-Stop-Close) control panel mounted push button station, and one (1) remotely located wall mount 3-Button push button. Includes Amber color WARNING strobe light, activates when gate is in operation.
 - c. Pneumatic Operation/Electric Controls; Pneumatic Drive Cylinder requires 90-100 psi clean and dry air, provided by others. Operator control panel requires 115 VAC (24 VAC Secondary), 60 HZ, includes Timer-to-Close capability, and two (2) remotely located wall mount single push button. Includes Amber color WARNING strobe light, activates when gate is in operation.
 - d. Pneumatic Operation/Pneumatic Controls; Pneumatic Drive Cylinder requires 90-100 psi clean and dry air, provided by others. Includes two (2) remotely located two button (Open-Close) push button station.

- 2. Mounting Location on mezzanine to be one of the following;
 - a. Deck Mount
 - b. Face Mount

- 3. Gate Section; to be factory welded frame work with horizontal top rail. Includes mid-rail, 4" high toe board, 42" overall height, and vertical members not to exceed 8' on center. Gate to have a minimum of four (4) non-corrosive guide blocks, no lubrication required. Gate shall meet or exceed Federal OSHA standard for standard railings at the time of manufacture relative to dimensions and loading. To be fabricated from one of the following;
 - a. Mild Steel
 - b. 304-2b Stainless Steel
 - c. 316L Stainless Steel

- 4. Vertical Guide Column Assembly; shall consist of formed columns of the same material as gate section, 120" standard height, prepped for the gate operating hardware and applicable mounting brackets. Standard Vertical Guide Column assemblies shall be fabricated to allow gate to bypass idler sheaves providing for a standard Clear Opening Height of 84".

- 5. Finish to be;
 - a. Mild steel mezzanine gates; exposed surfaces to be Powder Coat Safety Yellow. Hardware/fasteners to be Zinc plated.
 - b. Stainless steel mezzanine gates (304-2b or 316L); mill finish, acid washed. Interfering welds ground smooth, not polished. Hardware/fasteners to be Stainless Steel.

- 6. Warranty to be One (1) Year from date of shipment, finish excluded.

- 7. Available Options:
 - a. Electric and Pneumatic Operation/Electric Controls: Remote Controls, includes one (1) Universal Co-Axial Receiver and one (1) keypad transmitter.

Exclusions:

- 1. All electrical wiring or airline piping to and between all components by others.
- 2. Structural Review of mezzanine to accept loading and anchor design by others.

NAME	ADDRESS	PHONE
COMPANY	CITY, ST, ZIP	EMAIL

	Edge Fall Protection, LLC www.EDGEfallprotection.com TF/F: 844-314-1374 Info@edgefallprotection.com
---	--

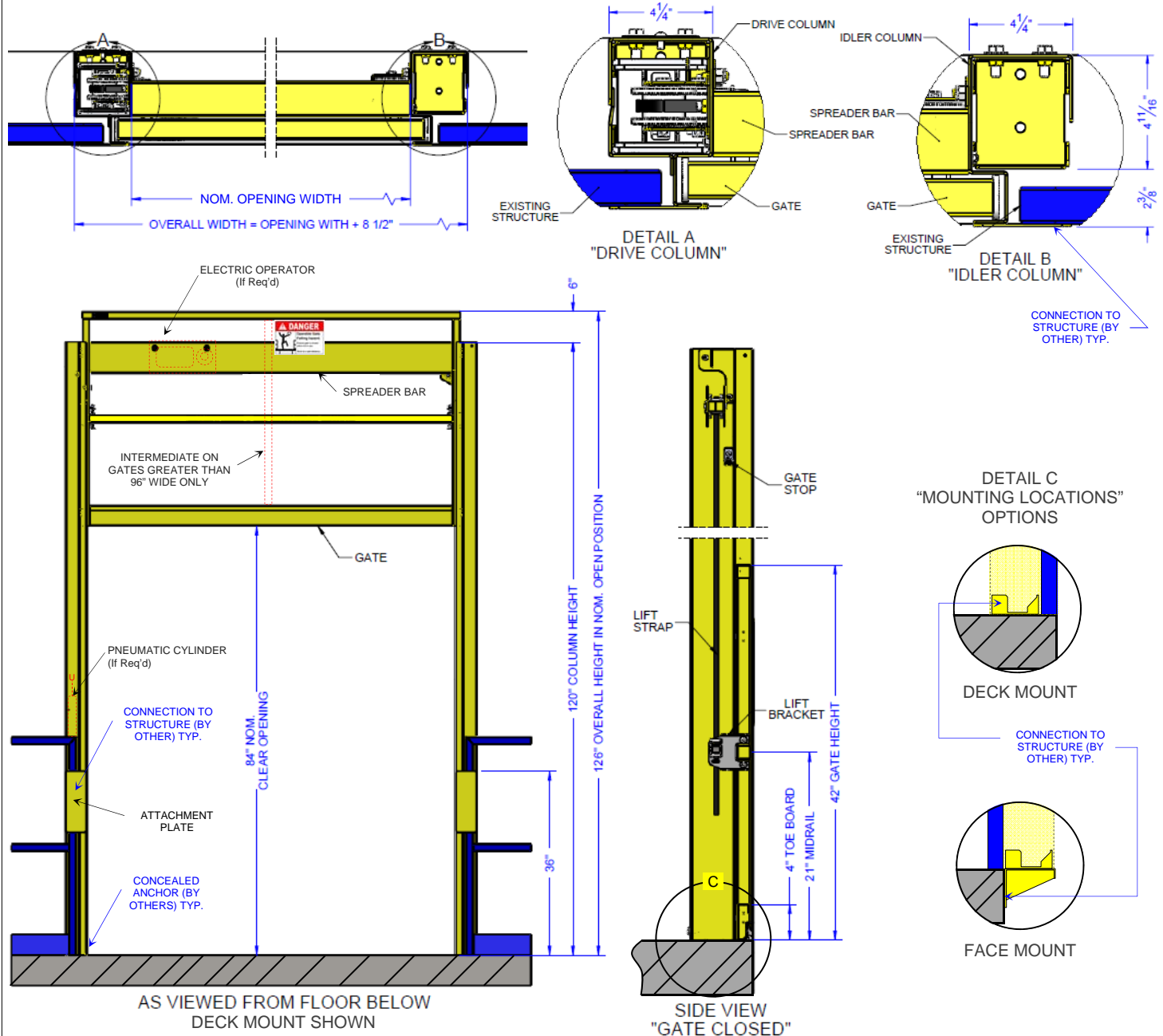
CUT-SHEET: VERTICAL MEZZANINE GATE; MODEL MGV

Quantity: _____

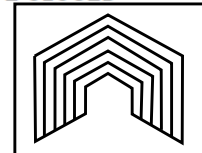
<input checked="" type="checkbox"/>	ID	Operation¹
<input type="checkbox"/>	M	Manual
<input type="checkbox"/>	E	Electric
<input type="checkbox"/>	N	Pneumatic Operation/Electric Controls
<input type="checkbox"/>	P	Pneumatic Operation/Pneumatic Controls
<input checked="" type="checkbox"/>	ID	Mounting Location (See Detail C)
<input type="checkbox"/>	D	Deck Mount
<input type="checkbox"/>	F	Face Mount
<input checked="" type="checkbox"/>	ID	Material/Finish
<input type="checkbox"/>	M	Mild Steel (Powder Coat Safety Yellow)
<input type="checkbox"/>	S	304 Stainless Steel (Unfinished/Mill)
<input type="checkbox"/>	L	316L Stainless Steel (Unfinished/Mill)
<input checked="" type="checkbox"/>	ID	Nominal Opening Width
<input type="checkbox"/>	048	4' (48")
<input type="checkbox"/>	072	6' (72") - STOCK SIZE ³ (Std. Col. Only)
<input type="checkbox"/>	096	8' (96") - STOCK SIZE ³ (Std. Col. Only)
<input type="checkbox"/>	120	10' (120")
<input type="checkbox"/>	144	12' (144")
<input type="checkbox"/>	168	14' (168")
<input type="checkbox"/>	192	16' (192")
<input type="checkbox"/>	###	Custom _____ (inches)
<input checked="" type="checkbox"/>	ID	Column Height
<input type="checkbox"/>	120	Standard (120") ²
<input type="checkbox"/>	###	Custom _____ (inches)
<input checked="" type="checkbox"/>	Custom Clear Opening Height⁴	
<input type="checkbox"/>	-- Dimension Required: _____ (inches)	
<input checked="" type="checkbox"/>	ID	OPTIONS¹ (Electric Controls Only)
<input type="checkbox"/>	511322	Radio Control Kit; Keypad
<input type="checkbox"/>	502918	Add'l Transmitter; Keypad Qty: _____
<input type="checkbox"/>	501715	Switch; Ceiling Pull Cord
<input type="checkbox"/>	511756	Photoeye Kit (Electric)
<input type="checkbox"/>	511754	Photoeye Kit (Pneumatic/Electric)

NOTES:

- See product Technical Data for details.
- Standard Column Height provides for 84" of Clear Opening Height below gate when in the full open position.
- Stock Gates are Mild Steel with Powder Coat Yellow Finish and Standard (120") Column, ONLY.
- If greater or less than 84", Custom Column Required.



NAME	ADDRESS	PHONE
COMPANY	CITY, ST, ZIP	EMAIL



Edge Fall Protection, LLC
 www.EDGEfallprotection.com
 TF/F: 844-314-1374
 Info@edgefallprotection.com