

# COMMERCIAL METAL STAIRWAYS

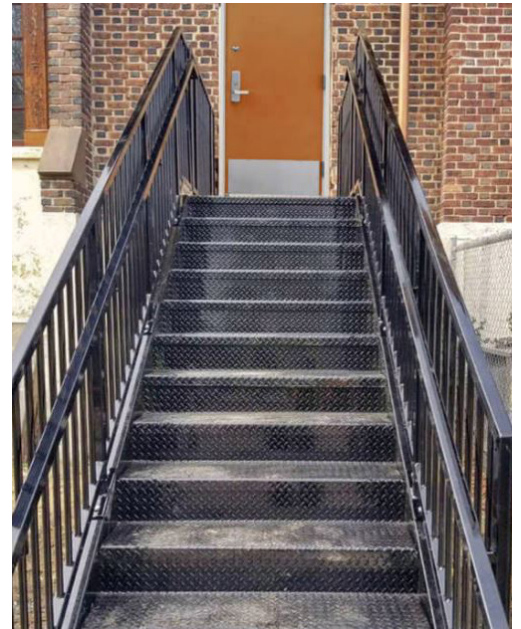
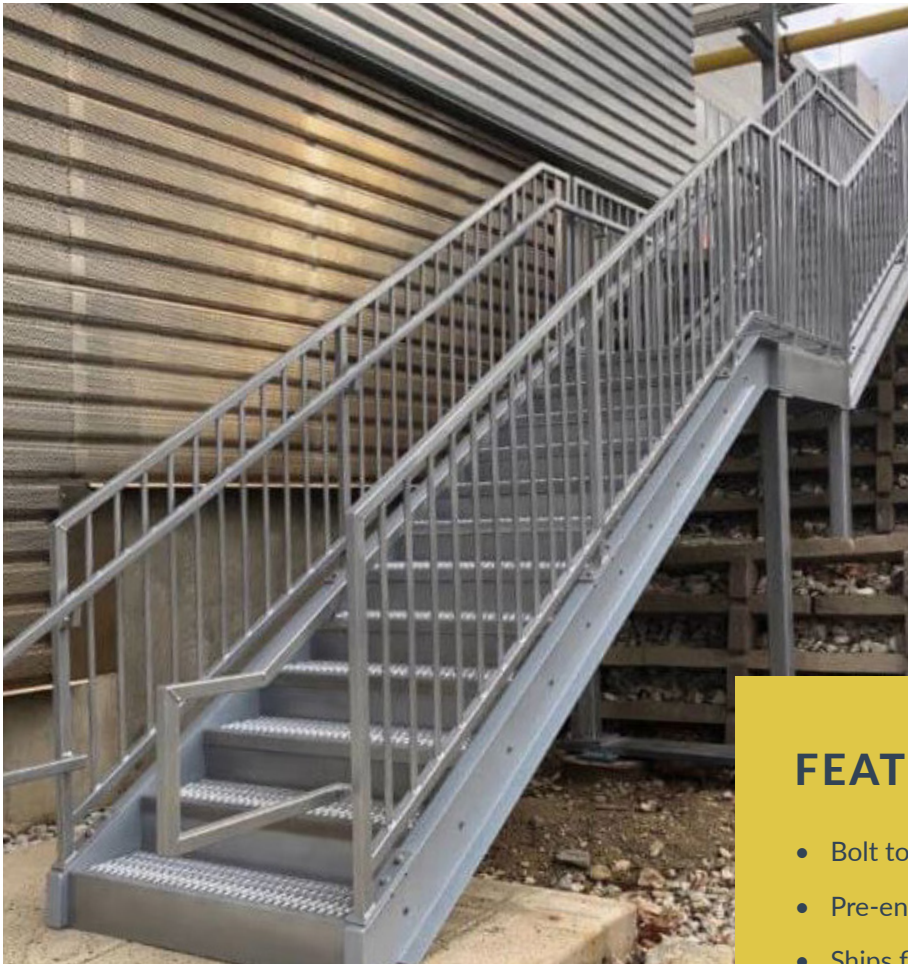


ErectaStep Commercial Series metal stairways are precision engineered, and prefabricated to provide the highest quality metal stair system available. Because it's fully compliant, designed to meet or exceed all International Building Codes (IBC) related to staircase construction, ErectaStep is perfect for all applications, both residential, commercial and industrial. Commercial Series provides a fast, complete solution for a wide variety of applications, from office buildings, storage mezzanines and residential.

## IBC COMPLIANT PREFABRICATED METAL STAIRS

ErectaStep prefabricated metal stair are perfect for all applications, both residential, commercial and industrial. Commercial Series provides a fast, complete solution for a wide variety of applications, from office buildings, storage mezzanines and residential.

Our Commercial series metal stairs are available in both aluminum and steel construction, and finished with a durable powder coat, available in a variety of colors to suit.



### FEATURES

- Bolt together construction—no welding required
- Pre-engineered for fast shipment
- Ships flat packed for lower shipping cost



# COST EFFECTIVE WITH A SUPERIOR QUALITY STANDARD

## SPECIFICATION

- IBC and OSHA Compliant
- Heavy duty steel construction
- Extra wide treads
- Railing with balusters
- Durable powder coated finish
- Powder coated safety yellow, other colors available
- Heavy duty.
- All bolt together design.
- Easy installation

## WE INSTALL TOO!

Let us install your stair system today.  
Call to get a quote for our professional installation services.



**IN STOCK READY TO SHIP!**

Order today. Install tomorrow.

## WHAT IS THE DIFFERENCE BETWEEN IBC AND OSHA REQUIREMENTS?

The differences between IBC and OSHA regulations are enormous. IBC codes, generally are far more stringent and comprehensive than OSHA. OSHA guidelines are established with the basic understanding that the end user would be primarily a properly trained adult user. Whereas IBC regulations assumes that the user may be a small child, therefore, the construction requirements must be far more stringent and comprehensive.



**EDGE**

FALL PROTECTION

844-314-1374 | [EDGEfallprotection.com](http://EDGEfallprotection.com) | [Info@edgefallprotection.com](mailto:Info@edgefallprotection.com)