

# TETHER TRACK MONORAIL



EDGE Fall Protection's Tether Track Monorail Systems offer rigid rail fall protection system which can span large or small areas. Ideal for indoor and outdoor applications for strength and mobility along a single axis. Our monorail fall protection systems are available in various configurations, including a ceiling mount monorail system or a free-standing monorail system, multiple track profiles, and support center distances, fall protection can be customized to fit your budget and application.

## RIGID RAIL ANCHOR SYSTEMS DESIGNED FOR FALL ARREST SOLUTIONS

The innovative design and heavy-duty construction of the Tether Track Monorail System provide fall safety for your workers while maximizing worker productivity. Your workers have an effective personal fall arrest system when the monorail anchorage is paired with a body harness and connector.

Personal active fall restraint systems are designed for your workers up to 310 lbs with tools when used with 900 pound Maximum Arresting Force (MAF) energy absorbing lanyards, properly rated full-body harnesses, and connecting devices. The monorail track can accommodate single or multiple workers. Variations include a single track, trussed track for longer spans, or dual track systems. Dual track systems allow users to pass by each other without detaching from the system while working in the system's coverage area.



The monorail fall protection system's enclosed track design keeps the tether track trolleys easily rolling so users have free range of motion throughout their work activities. Their tie-off point remains overhead.

Various finishes are available including stainless steel, galvanized steel, food grade epoxy, or standard baked enamel.

## OSHA AND ANSI COMPLIANT

All configurations meet or exceed OSHA safety standards. In particular, EDGE's Tether Track Monorail Systems meets the OSHA 1926 Subpart M Construction standard and satisfies the ANSI Z359 Fall Protection code.



## CEILING MOUNTED MONORAIL SYSTEM

Ceiling mounted monorails provides fall protection while maintaining an open floor plan for production, material handling, or other related activities. Ceiling supported monorails use existing support steel for anchorage strength and are ideal for production facilities and warehouses with tall ceilings since column support is not needed. Ceiling mounted monorail systems can either be mounted flush with the ceiling or it can be dropped down to the appropriate height. If your facility has standard ceiling heights, the low-profile design of ceiling-mounted monorails provides full protection and no concerns about your worker's headroom.

Ceiling-mounted monorails systems are available in unlimited monorail lengths with up to 50' between supports. A variety of hanger options are available to accommodate your building structure. Curved track sections are available for more flexible systems.

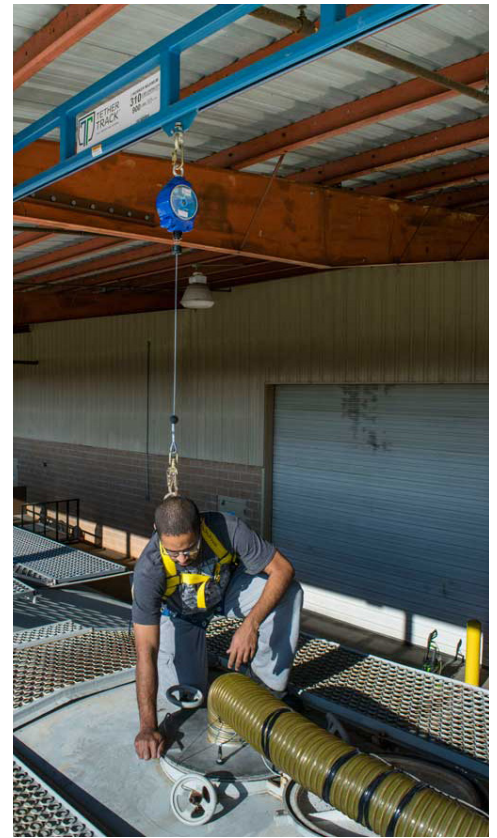
**Ceiling Mounted Monorail System Includes:** Monorail or Dual Monorail, end stops, splice joints, hanger brackets with threaded rod and hardware, and Tether Trolley(s).

---

## FREE STANDING MONORAIL SYSTEM

Appropriate for areas that require long spans, a free-standing monorail fall protection system provides support when your building structure is inadequate for ceiling-mounted applications, when floor space is readily available, or when an existing structure is not available. This system provides a permanent single path of fall protection for workers while maintaining, inspecting, or loading/unloading railcars, tankers, or flatbed trucks.

Free standing monorail personal fall arrest systems are available in a single track or dual-track style, with heights up to 26' and lengths up to 204'. Standard support centers are from 7' to 35', up to 50' custom designed. Arm lengths are up to 30' and heights are optimized per application.



Numerous configurations are available, including a goal post design or cantilever design. A goal post design, consisting of two columns and a header, can be bolted directly into a concrete floor. A cantilevered design allows for fewer support columns and accommodates headroom constraints. Such systems are ideal for outdoor applications such as loading and unloading rail cars or flat bed trucks, activities in the transportation industry, and other applications. These systems are optimized for outdoor use by including ice, snow, and wind loads, lining the enclosed track with a durable interior track coating, and using corrosion-resistant hardware.

**Free Standing Monorail System Includes:** Monorail, end stops, splice joints, free standing hanger assemblies, appropriate number of steel support assemblies and Tether Trolleys.

# TURNKEY INSTALLATION BY EDGE FP

While we are always happy to provide detailed installation instructions so you can get the job done in house, EDGE FP also offers turnkey installations on all of our systems. If you want to leave the details and concerns of proper setup, we'd be happy to send our team of professional installers directly to your job site or facility. We are ready to work anywhere in the USA!

## FEATURES

- The personal fall arrest system provides mobility along a single axis, for applications when workers need to travel along a straight line
- Track can accommodate single or multiple workers; dual bypassing track allows workers to safely pass each other without disconnecting
- Integral trolley easily moves on enclosed track, keeping the fall arrest system in a vertical plane
- Tether track monorail available in ceiling mounted designs
  - » Unlimited ceiling monorail lengths with up to 50' between supports
  - » Variety of hanger options are available to accommodate your building roof structure
  - » Curved track sections for more flexible systems are available
- Tether track monorail available in free standing monorail designs
  - » Freestanding safety option is appropriate when structure is inadequate for ceiling mount or existing structure is not available.
  - » Goal post design, comprised of two columns and a header, can be bolted directly into your concrete floor
  - » Cantilevered designs allow for fewer support columns and accommodates headroom constraints
  - » Free standing monorail systems with standard support centers from 7' to 35', up to 50' custom designed, arm lengths up to 30'
  - » Available in heights up to 26' and lengths up to 204'
  - » Corrosion resistant hardware and outdoor coatings available for maximum protection in outdoor environments
  - » Overhead fall protection systems designed to withstand wind, snow, and ice loads
- Tether track monorail can accommodate workers up to 310 lbs with tools when used with 900 lbs Maximum Arresting Force (MAF) energy absorbing lanyards, properly rated full-body harness and connecting device.
- Designed to meet the OSHA 1926 Subpart M Construction standard, ANSI Z359 Fall Protection Code, and NIOSH guidelines



EDGE  
FALL PROTECTION

844-314-1374 | [EDGEfallprotection.com](https://www.EDGEfallprotection.com) | [Info@edgefallprotection.com](mailto:Info@edgefallprotection.com)